

# NEVADA NATIVE PLANT SOCIETY



*Eriogonum ovalifolium*

---

## SOCIETY NEWS

---

### SOUTHERN NEVADA & NORTHERN NEVADA EVENTS

All April meetings are currently cancelled. Earth Day events in Reno and Las Vegas have also been cancelled and the Pollinator Day at UNR has been postponed from May to June.

Tiehm's buckwheat Public Workshops  
The public workshops regarding the status of Tiehm's buckwheat, hosted by the Nevada Division of Forestry, will be rescheduled once state offices reopen.

For all cancellations and postponements, NNPS will post updates on our website when we have more information.

### GRANTS

This year's Margaret Williams Research Grants were awarded to Teague Embrey to study rare varieties of *Eriogonum microthecum* in Lincoln County and to Austin Rosen to study rare *Cirsium* species in southern Nevada. Congratulations to Teague and Austin!

### JAMES REVEAL ERIOGONUM PROJECT GRANT

The [Eriogonum Society](#) would like to announce a grant opportunity designed to aid in scientific research, educational outreach, or other worthy projects that relate to the large genus *Eriogonum* (*Polygonaceae*). This award honors the preeminent authority on Eriogonum and prolific botanist, the late Dr. James Reveal. Projects that aim to promote conservation efforts or inform our knowledge of the basic biology and natural history



through field or horticulture research will be given preferential consideration. Award size will depend upon merit and need. The maximum amount granted will be \$2,000. Funds are not intended to cover salary for applicants or others involved.

### Guidelines and Requirements

- Applications must not to exceed four typed pages.
- Applications must have a project title and names and contact information for all involved.
- Applications must include a project description providing details of the project, background information, basic methods employed to accomplish the objective(s), and discussion of the importance of the proposed project, such as research, education, outreach, and so on.

- Include a detailed budget of how the grant would be utilized for project.
- Provide a personal statement including necessary experience and qualifications, as well as personal background and reason for interest in *Eriogonum*.
- Grant recipients are required to write an article for the Eriogonum Society newsletter or give a presentation at an Eriogonum Society annual meeting.

### Submissions are due 18 April 2020.

Submit your full grant proposal as a single PDF to [gradyb@ripon.edu](mailto:gradyb@ripon.edu) by the above due date. Any questions can be directed to Ben Grady at [gradyb@ripon.edu](mailto:gradyb@ripon.edu).

## WETLAND PLANT DATA

The Nature Conservancy (TNC) is seeking wetland plant population counts and abundance estimates for Nevada, both historic and current. Associated location data would be highly desirable. If you or anyone you know may be able to help, please email Louis Provencher, [lprovencher@tnc.org](mailto:lprovencher@tnc.org). Once compiled, this data will be forwarded to the Nevada Division of Natural Heritage. TNC is interested in the following species:

*Angelica scabrida*, rough angelica  
*Anodonta californiensis*, California floater  
*Antennaria arcuata*, meadow pussytoes  
*Astragalus diversifolius*, meadow milkvetch  
*Astragalus hornii* var. *hornii*, Horn milkvetch  
*Astragalus lentiginosus* var. *sesquimetralis*,  
Sodaville milkvetch  
*Astragalus robbinsii* var. *occidentalis*,  
Lamoille Canyon milkvetch  
*Botrychium ascendens*, upswept moonwort  
*Botrychium crenulatum*, dainty moonwort  
*Calochortus striatus*, alkali mariposa lily  
*Castilleja salsuginosa*, Monte Neva  
paintbrush  
*Centaureum namophilum*, spring-loving  
centaury  
*Cirsium virginense*, Virgin River thistle  
*Dermatocarpon luridum*, silverskin lichen  
*Elodea nevadensis*, Nevada waterweed  
*Eriogonum argophyllum*, Sulphur Springs  
buckwheat  
*Eustoma exaltatum*, catchfly gentian  
*Fimbristylis thermalis*, hot spring feathersedge  
*Grindelia fraxinopratensis*, Ash Meadows  
gumplant  
*Imperata brevifolia*, satintail  
*Ivesia kingii* var. *eremica*, Ash Meadows  
mousetails  
*Ivesia ptyocharis*, Pine Nut Mountains  
mousetails  
*Lepidium davisii*, Davis peppergrass  
*Meesia triquetra*, threerank hummock  
*Nitrophila mohavensis*, Amargosa niterwort  
*Phacelia inundata* playa, phacelia

*Phacelia minutissima*, least phacelia  
*Phacelia parishii*, Parish phacelia  
*Polycytenium fremontii* var. *bisulcatum*, Silvies  
Valley combleaf  
*Polycytenium williamsiae*, Williams combleaf  
*Potentilla basaltica*, Soldier Meadow  
cinquefoil  
*Rorippa subumbellata*, Tahoe yellowcress  
*Sisyrinchium funereum*, Death Valley blue  
eyed grass  
*Sisyrinchium radicum*, Saint George blue  
eyed grass  
*Solorina spongiosa*, fringed chocolate chip  
lichen  
*Spiranthes diluvialis*, Ute ladies tresses  
*Spiranthes infernalis*, Ash Meadows lady's  
tresses  
*Synthyris ranunculina*, Charleston kittentails



*Castilleja salsuginosa* by J. Johnson

# The Eriogonum Society

## Annual Meeting 2020

### Elko, Nevada



*Eriogonum lewisii* - Lewis'  
wild buckwheat



*Eriogonum kingii* - Ruby  
Mountains wild buckwheat



*Eriogonum douglasii* var.  
*elkoense* - Sunflower Flat  
wild buckwheat

The Eriogonum Society was founded to promote the conservation and appreciation of our wild buckwheats both in the garden and in the wild. This year we will be exploring the wild buckwheats of Elko County, including rare and endemic species.

Membership in the Eriogonum Society also includes access to our seeds exchange, our buckwheat packed newsletter, and supports the Dr. James Reveal Memorial Grant to advance research on our favorite genus.

## 2020 Meeting Agenda

Thursday - Board Meeting  
and evening reception at  
the Northeastern Nevada  
Museum

Friday - Driving tour of  
rare buckwheats in the  
Mountain City area,  
north of Elko

Saturday - Eriogonum  
identification workshop  
and short field trip near  
Elko

Sunday - Driving tour of  
Ruby Valley and Ruby  
Mountains, including  
Lamoille Canyon

Registration includes workshop, field trips led by local botanists, evening presentations, and dinner on Friday and Saturday nights. One-day and no-meals options available.

Full Registration before April 30th - \$135  
Full Registration after April 30th - \$150

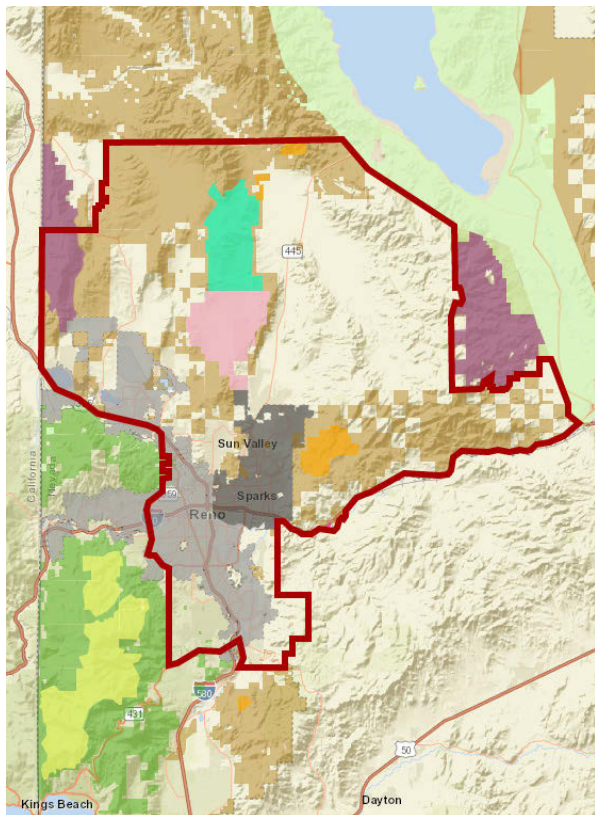
If our meeting cannot be held due to COVID-19 restrictions, refunds will be issued and the meeting will be postponed until 2021.

Visit [Eriogonum.org](https://erigonum.org) for more information and to register for the meeting.



## MASON BEE HOUSES

We have been offered a non-profit discount on mason bee/pollen bee nests from [masonbeenest.com](http://masonbeenest.com). The nests are made from recycled plastic with paper tubes in different sizes for various types of bees. They are scientifically designed to attract native bees and protect them from fungus, parasites, and predators. They come with an instruction book, cleaning kits are also available. The retail price is \$40 for two nests but we can offer them to members at \$12.50 each. Please email Janel at [president@nvnp.org](mailto:president@nvnp.org) if you're interested.

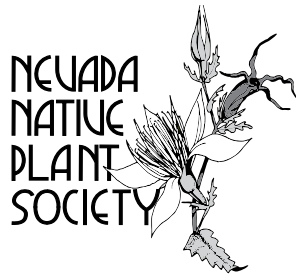


## WASHOE COUNTY LANDS BILL

Washoe County, the City of Reno, and the City of Sparks are proposing a federal lands bill that would transfer federal lands around Reno and Sparks to the county and cities while designating land in northern Washoe County as Wilderness areas and National Conservation Areas. While this would give additional protection to the wilderness and conservation areas, large portions of the current Wilderness Study Areas (roadless areas that are being considered for wilderness protections) would be returned to unprotected BLM lands open to new roads, mining, and other extractive uses. Public meetings about the bill have been postponed or cancelled due to the corona virus outbreak but you can still view maps and information and submit comments at [landsbill.org](http://landsbill.org).

Nevada Native Plant Society  
PO Box 8965  
Reno NV 89507-8965

RETURN SERVICE REQUESTED



## MEMBERSHIP APPLICATION

Name\_\_\_\_\_

Phone\_\_\_\_\_

Mailing Address\_\_\_\_\_

City\_\_\_\_\_ State\_\_\_\_\_ Zip\_\_\_\_\_

Email\_\_\_\_\_ ☐ Renewal

Newsletter preference: ☐ Paper ☐ Electronic

- |   |          |  |
|---|----------|--|
| • Individual, family or group for one year .....    | \$20.00  | Dues are for the calendar year in which you join. Membership expiration dates are on the mailing labels. |
| • Individual, family or group for three years ..... | \$50.00  |  |
| • Student or senior citizen, each year .....        | \$15.00  |  |
| • Life membership .....                             | \$500.00 |  |

Gifts, and bequests are tax deductible.

Your donation in any amount is appreciated \$\_\_\_\_\_

Please make checks payable and mail to: NNPS • P.O. Box 8965 • Reno, NV 89507